

**GUAM COMMUNITY COLLEGE
Board of Trustees**

ORGANIZATIONAL CHART OF GUAM COMMUNITY COLLEGE

WHEREAS, the Professional Technological Institute, Office of the Vice President, created by the Board of Trustees on September 16, 1998 is no longer an active Division of the College; and

WHEREAS, the College has merged the functions of the former Professional Technological Institute into the Academic Affairs Division, School of Trades and Professional Services; and

WHEREAS, the President and the Human Resources Office has drafted an Organizational Chart that reflects the current organization of the College.

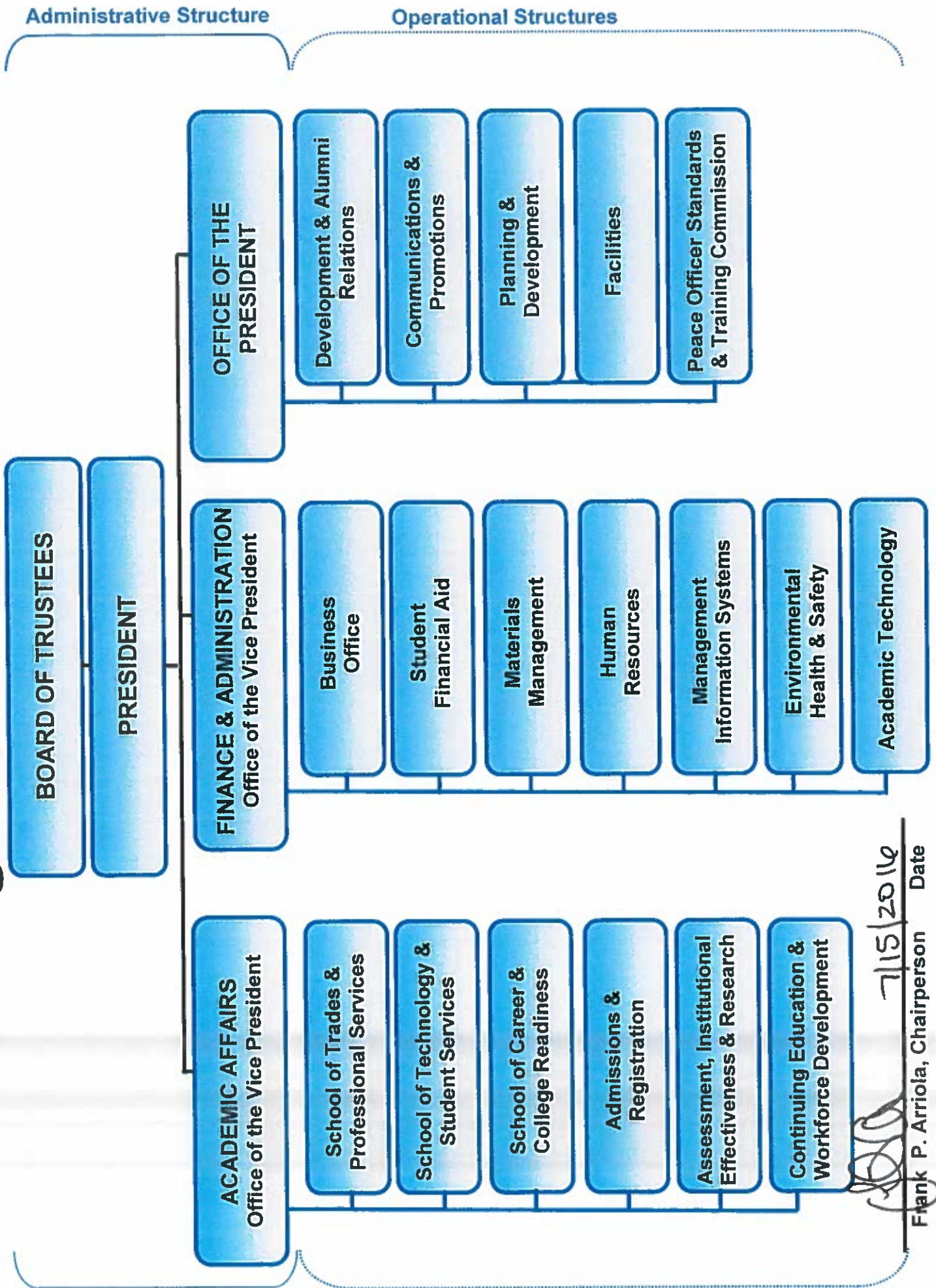
NOW, THEREFORE, BE IT RESOLVED, that the Board of Trustees formally adopts the Organizational Chart as a current reflection of the institution's structure.

**Amended & Adopted: July 24, 2014
Resolution No.: 32-2014**

**Amended & Adopted: September 5, 2008
Resolution No.: 22-2008**

**Adopted: May 15, 2001
Resolution 5-2001**

Guam Community College Organizational Chart



7/15/2016

Frank P. Arriola, Chairperson Date