

POLICY REVIEW TOOL
Criteria for BOT Policy Review
Academic Year 2020-2021

Policy No 140
Title of Policy Organizational Chart of Guam Community College
Category _____
Date of Policy Amended and adopted 07/24/2014
Age of policy (in years) 6 yrs 7 mos

REVIEW CRITERIA

1. **Currency or Timeliness**
 - a. Does the existing policy use references to current practice in the field? ☒ yes
☒ no
 - b. Does the existing policy as written reflect verbiage that is consistent with current usage? ☐ yes
☐ no
2. **Institutional Need and Direction**
 - a. Does the existing policy reflect the needs and direction of the institution as it now enters its 44th year of existence? ☒ yes
☐ no
 - b. Does the existing policy take the current structure of the college's programs and services into account? TSS
☒ yes
☐ no
3. **Changing Institutional and Societal Context**
 - a. Does the existing policy reflect the changing context of industry needs on the island? ☒ yes
☐ no
 - b. Does the existing policy reflect the way GCC has changed to accommodate the demands of the community through the years? ☒ yes
☐ no

Total YES _____
Total NO _____

RECOMMENDATION: (☒) Revise/update (☐) Delete (☐) Remain

REASON: Include School of Technology and Student Services

Reviewed by Gina Tudek
(Print name)

[Signature]
(Signature)

VPAA
(Dept/School)

Form approved by GCC BOT, February 15, 2009

✓
Not needed.
Pro Tech was
just merged

**GUAM COMMUNITY COLLEGE
Board of Trustees**

ORGANIZATIONAL CHART OF GUAM COMMUNITY COLLEGE

WHEREAS, the Professional Technological Institute, Office of the Vice President, created by the Board of Trustees on September 16, 1998 is no longer an active Division of the College; and

WHEREAS, the College has merged the functions of the former Professional Technological Institute into the Academic Affairs Division, School of Trades and Professional Services; and

WHEREAS, the President and the Human Resources Office has drafted an Organizational Chart that reflects the current organization of the College.

NOW, THEREFORE, BE IT RESOLVED, that the Board of Trustees formally adopts the Organizational Chart as a current reflection of the institution's structure.

Amended & Adopted: July 24, 2014
Resolution No.: 32-2014

Amended & Adopted: September 5, 2008
Resolution No.: 22-2008

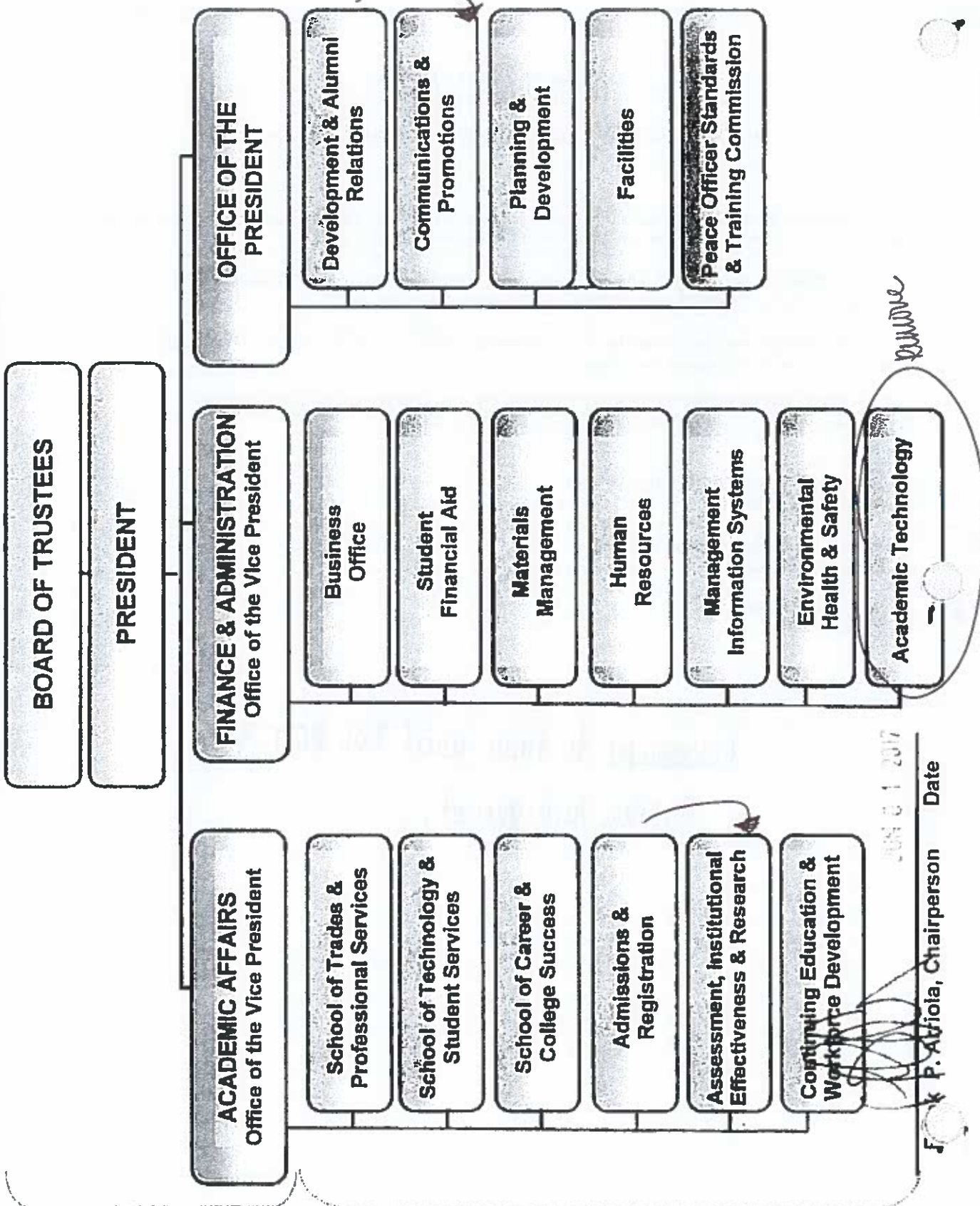
Adopted: May 15, 2001
Resolution 5-2001

*Recommend to table until Fall 2021 to
capture realignment.*

Quincy Community College Organizational Chart

Administrative Structure

Operational Structures



JUN 01 2007

Date

F. P. Ariola, Chairperson

**GUAM COMMUNITY COLLEGE
Board of Trustees**

ORGANIZATIONAL CHART OF GUAM COMMUNITY COLLEGE

WHEREAS, the Professional Technological Institute, Office of the Vice President, created by the Board of Trustees on September 16, 1998 is no longer an active Division of the College; and

WHEREAS, the College has merged the functions of the former Professional Technological Institute into the Academic Affairs Division, School of Trades and Professional Services; and

WHEREAS, the President and the Human Resources Office has drafted an Organizational Chart that reflects the current organization of the College;

NOW, THEREFORE, BE IT RESOLVED, that the Board of Trustees formally adopts the Organizational Chart as a current reflection of the institution's structure.

Amended & Adopted: July 24, 2014
Resolution No.: 32-2014

Amended & Adopted: September 5, 2008
Resolution No.: 22-2008

Adopted: May 15, 2001
Resolution 5-2001

defer policy 140 until FA 21