

# ASL100-31 American Sign Language I FA20 (Online)

HOME My courses ASL100-31 FA20 Quizzes Quiz 2 Preview

You can preview this quiz, but if this were a real attempt, you would be blocked because:  
This quiz is not currently available.

Match the correct signs:



Choose...



Choose...



Choose...



Choose...



Choose...

Question 1  
Not yet answered  
Points out of 1.00  
Flag question  
Ask question

Quiz navigation



Finish attempt...  
Start a new preview

Drag and drop correct sign for the pictures.



Question 2  
Not yet answered  
Points out of 1.00  
Flag question  
Ask question

True or False:

A preferred way of getting the attention of someone is clapping hands in the person's field of vision.

Select one:

- ☐ True  
☐ False

Question 3  
Not yet answered  
Points out of 1.00  
Flag question  
Ask question



Drag the correct ASL words in the correct key structure into the boxes.

Hint: All words listed should be used.

Student Teacher horizontal-striped vertical-striped last good also shirt

Question 4  
Not yet answered  
Points out of 1.00  
Flag question  
Ask question



Drag and drop the ASL words in the correct order as signed in the video above.

CHUR BORROW TAKE DONT MIND SIT I BOOK

Question 5  
Not yet answered  
Points out of 1.00  
Flag question  
Ask question

True or False: Twisting movement outward from the body is used for the negatives LIKE, WANT, and KNOW.

Select one:

- ☐ True  
☐ False

Question 6  
Not yet answered  
Points out of 1.00  
Flag question  
Ask question



Answer:

A woman with dark hair, wearing a red short-sleeved shirt, is shown from the chest up. She is gesturing with her right hand near her face and her left hand extended outwards. In the top left corner of the video frame, there is a small white play button icon inside a rounded rectangle. The background is a simple indoor setting with a doorway and a bed visible.

Answer:

SIT	OPEN DRAWER	CHAIR	DRAWER	WINDOW	DOOR	WRITE	OPEN WINDOW	CAR	OPEN BOOK	RIDE	BICYCLE	OPEN DOOR	DRIVE	PEN	PENCIL	BOOK
-----	-------------	-------	--------	--------	------	-------	-------------	-----	-----------	------	---------	-----------	-------	-----	--------	------



Answer:



Select one:

- ☐ a. BEGIN
- ☐ b. WRITE
- ☐ c. START
- ☐ d. THIS
- ☐ e. PENCIL

Question 11

Not yet answered

Points out of 1.00

Flag question

Call question

Match the correct colors to the signed image.



Choose...



Choose...



Choose...



Choose...



Choose...



Choose...

Question 12  
Not yet answered  
Points out of 1.00  
Flag question  
Submit question

Fill in the blank.

**Grammar Note**

... who ...

Remember that the question LOOK\*LIKE? is made like other questions asking for information, with eyebrows squeezed together and the head

Answer:

Question 13  
Not yet answered  
Points out of 1.00  
Flag question  
Submit question

Fill in the fingerspelled word signed in the video. Do not add any periods, commas, or punctuation.



Answer:

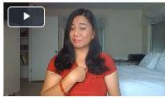
Question 14  
Not yet answered  
Points out of 1.00  
Flag question  
Submit question



What is the correct sign for the video?

Answer:

Question 15  
Not yet answered  
Points out of 1.00  
Flag question  
Submit question



Drag and drop the ASL words in the correct order as signed in the video. (2 ASL phrases)

wrong no way! Me go do it. don't want! Self do it

Question 16  
Not yet answered  
Points out of 1.00  
Flag question  
Submit question

Match the correct ASL words.



Choose...



Choose...



Choose...



Choose...

Question 17  
Not yet answered  
Points out of 1.00  
Flag question  
Submit question

Match the words to the signs.



Choose...



Choose...



Choose...



Choose...



Choose...

Question 18  
Not yet answered  
Points out of 1.00  
Flag question  
Submit question

Finish attempt...