

# ASL100-31 American Sign Language I FA20 (Online)

[Home](#) [My courses](#) [ASL100-31 FA20](#) [Quizzes](#) [Quiz 1](#) [Preview](#)

You can preview this quiz, but if this were a real attempt, you would be blocked because:

This quiz is not currently available

True or False. It is particularly important to say EXCUSE-ME if there is no way to reasonably avoid walking between two signers who are having a conversation.

Select one:

- ☐ True  
☐ False

Question 1

Not yet answered  
Points out of 1.00

[Flag question](#)

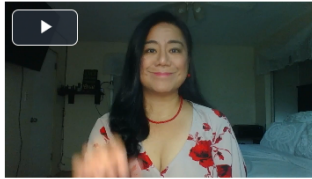
[Edit question](#)

Quiz navigation

1	2	3	4	5
6	7	8	9	10
11	12	13	14	15

[Finish attempt ...](#)

[Start a new preview](#)



Select the best "ASL Translation" for video signed above.

Select one:

- ☐ a. Yes, I'm hearing.  
☐ b. Yes, I'm a hearing person.  
☐ c. Yes, me hearing.  
☐ d. Yes, I hearing I.  
☐ e. Yes, I deaf I

Question 2

Not yet answered  
Points out of 1.00

[Flag question](#)

[Edit question](#)

Your head should be tilted forward and eyebrows squeezed together when asking for a negative or positive response.

Select one:

- ☐ True  
☐ False

Question 3

Not yet answered  
Points out of 1.00

[Flag question](#)

[Edit question](#)



Not yet answered  
Points out of 1.00  
Flag question  
Edit question

Fill-in the fingerspelled word signed in the video. Do not add any periods, commas, or punctuation.

Answer:



Question 5  
Not yet answered  
Points out of 1.00  
Flag question  
Edit question

Select the correct ASL sentence for the signed video above.

Select one:

- ☐ a. ROOM MOVE-THERE HURRY PLEASE.
- ☐ b. CAN YOU MOVE THE BOX THERE? PLEASE HURRY.
- ☐ c. BOX MOVE-THERE HURRY PLEASE
- ☐ d. THANK-YOU. I NEED BRING-HERE BOX.
- ☐ e. BRING-HERE BOX HURRY PLEASE.



Question 6

Not yet answered

Points out of 1.00

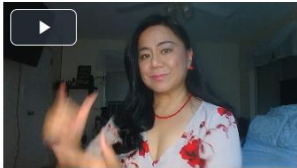
Flag question

[Edit question](#)

Select the vocabulary word for sign above.

Select one:

- ☐ a. You
- ☐ b. Your-pl
- ☐ c. You're
- ☐ d. Your
- ☐ e. You-pl



Question 7

Not yet answered

Points out of 1.00

Flag question

[Edit question](#)

Select the vocabulary word for video signed above.

Select one:

- ☐ a. Hope
- ☐ b. Right
- ☐ c. Head
- ☐ d. Brother
- ☐ e. Sister



Question 8

Not yet answered

Points out of 1.00

Flag question

[Edit question](#)

Select the answer for the signed video above.

Select one:

- ☐ a. describe
- ☐ b. educate
- ☐ c. academic
- ☐ d. lesson
- ☐ e. category



Select the answer for the signed video above.

Select one:

- ☐ a. signing
- ☐ b. more
- ☐ c. mainstream
- ☐ d. learn
- ☐ e. meeting

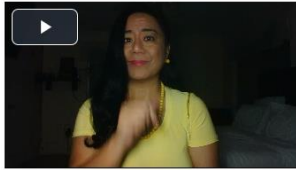
Question 9

Not yet answered

Points out of 1.00

[Flag question](#)

[Edit question](#)



Select the best ASL Translation of the video above.

Select one:

- ☐ a. Again please, I don't understand.
- ☐ b. Not understanding you. Say it again, please.
- ☐ c. I don't understand. Please repeat.
- ☐ d. Not understand I. Again please
- ☐ e. Please repeat your sign. I didn't understand.

Question 10

Not yet answered

Points out of 1.00

[Flag question](#)

[Edit question](#)

Question 11

Not yet answered

Points out of 1.00

Flag question

Edit question



Fill-in the fingerspelled word signed in the video. Do not add any periods, commas, or punctuations.

Answer:

Question 12

Not yet answered

Points out of 1.00

Flag question

Edit question



Fill-in the fingerspelled word signed in the video. Do not add any periods, commas, or punctuations.

Answer:

Question 13

Not yet answered

Points out of 1.00

Flag question

Edit question



What is the sign? One word. No punctuation.

Answer:



What is the correct sign?

Select one:

- ☐ a. True
- ☐ b. Please
- ☐ c. Thanks-a-lot
- ☐ d. Sorry
- ☐ e. Thank-you

Question 14

Not yet answered

Points out of 1.00

Flag question

Edit question

The sign OH-I-SEE is not used for an affirmative response.

Select one:

- ☐ True
- ☐ False

Question 15

Not yet answered

Points out of 1.00

Flag question

Edit question

Finish attempt ...