

Committee on College Assessment (CCA)

2014 Assessment Leadership Summit

Please take 90 seconds to write down one (1) question you would like answered.



For example:

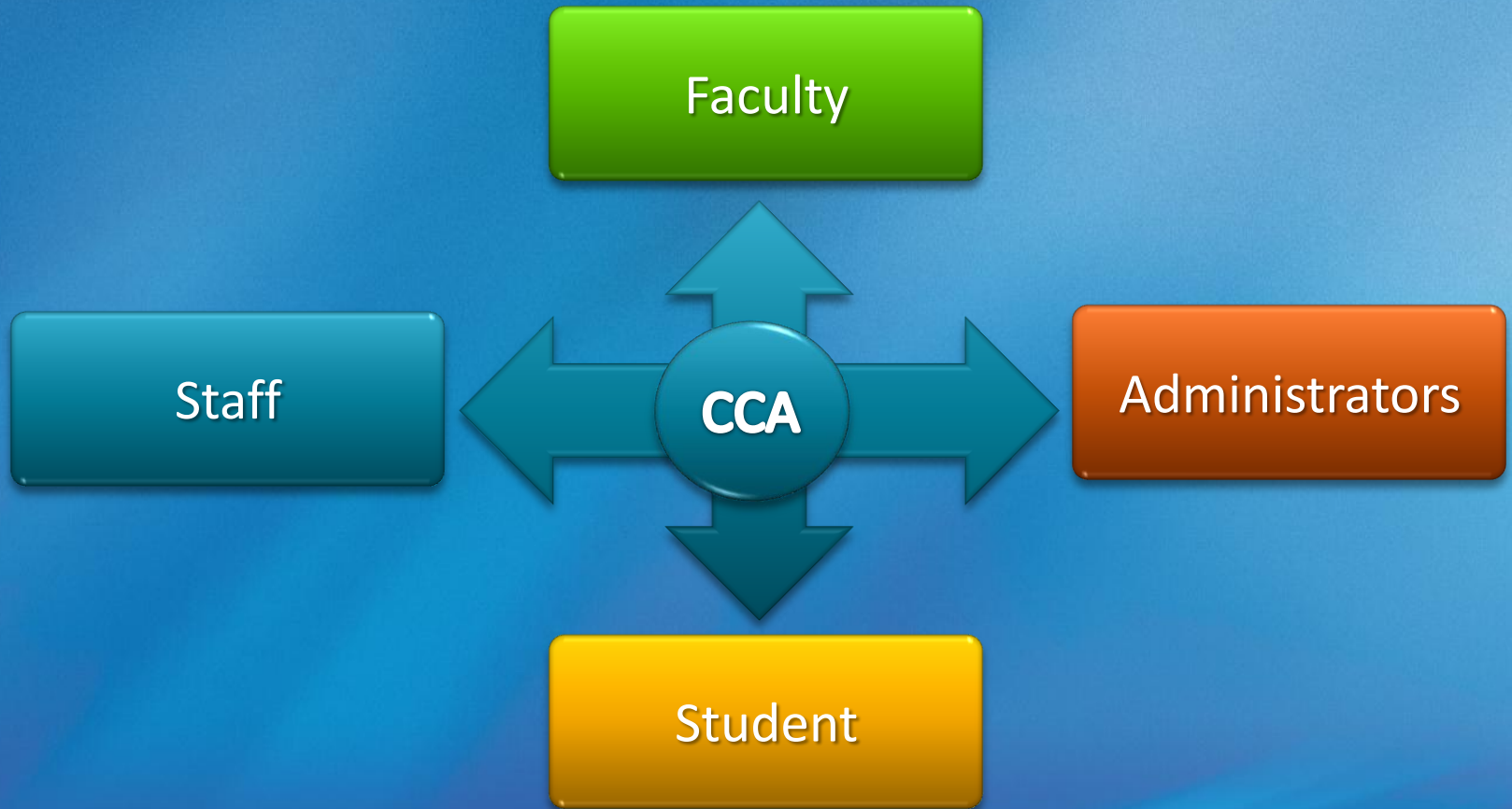
1. Can AIER provide institutional, program, and course-level data for use in assessment reports?

Agenda

- Welcome Remarks
- Why do we do assessment at GCC?
- Fall 2014 Deadlines
- Campus Training
- AssessmentTools
- TracDat Administrative Tasks
- Annual Assessment Leadership



WELCOME



Why do we do assessment at GCC?

Quality

Improvement

Continuous
and
Systematic

Student
Success

Accountability

Effectiveness

	GROUP A Associate Degree	GROUP B Certificate Programs	GROUP C Administrative & Student Services Units	GROUP D Special Programs
FALL 2014	Program & Course SLO Assessment Plan Go to Program/Unit-Level Assessment Plan Tab and Course-Level Assessment Plan Tab & Sub-tabs and enter data in each field/box for the new cycle DEADLINE: October 13, 2014	Program & Course SLO Implementation Status Input the status of implementing use of SLO assessment results in TracDat's Data Collection Status/Summary of Results (N=?) Tab & Sub-tabs DEADLINE: October 13, 2014	Admin/Student Services Unit AUO/SSUO Assessment Report Input AUO/SSUO assessment results and record how results will be used for improvement in TracDat's Data Collection Status/Summary of Results (N=?) Tab & Sub-tab DEADLINE: October 13, 2014	Program & Course SLO Data Collection Status Gather data continuously; Enter status of data collected for the SLOs in TracDat's Data Collection Status/Summary of Results (N=?) Tab & Sub-tabs DEADLINE: October 13, 2014
SPRING 2015	Program & Course SLO Data Collection Status Gather data continuously; Enter status of data collected for the SLOs in TracDat's Data Collection Status/Summary of Results (N=?) Tab & Sub-tabs DEADLINE: March 9, 2015	Program & Course SLO Assessment Plan Go to Program/Unit-Level Assessment Plan Tab and Course-Level Assessment Plan Tab & Sub-tabs and enter data in each field/box for the new cycle DEADLINE: March 9, 2015	Admin/Student Services Unit AUO/SSUO Implementation Status Input the status of implementing use of AUO/SSUO assessment results in TracDat's Data Collection Status/Summary of Results (N=?) Tab & Sub-tabs DEADLINE: March 9, 2015	Program & Course SLO Assessment Report Input SLO assessment results and record how results will be used for improvement in TracDat's Data Collection Status/Summary of Results (N=?) Tab & Sub-tabs DEADLINE: March 9, 2015

Campus Training

- September, October, and November 2014
 - Individual, one-on-one training
 - Department

N=?

TracDat
Username &
Password

TracDat URL &
Navigation

Deadline
Requirements

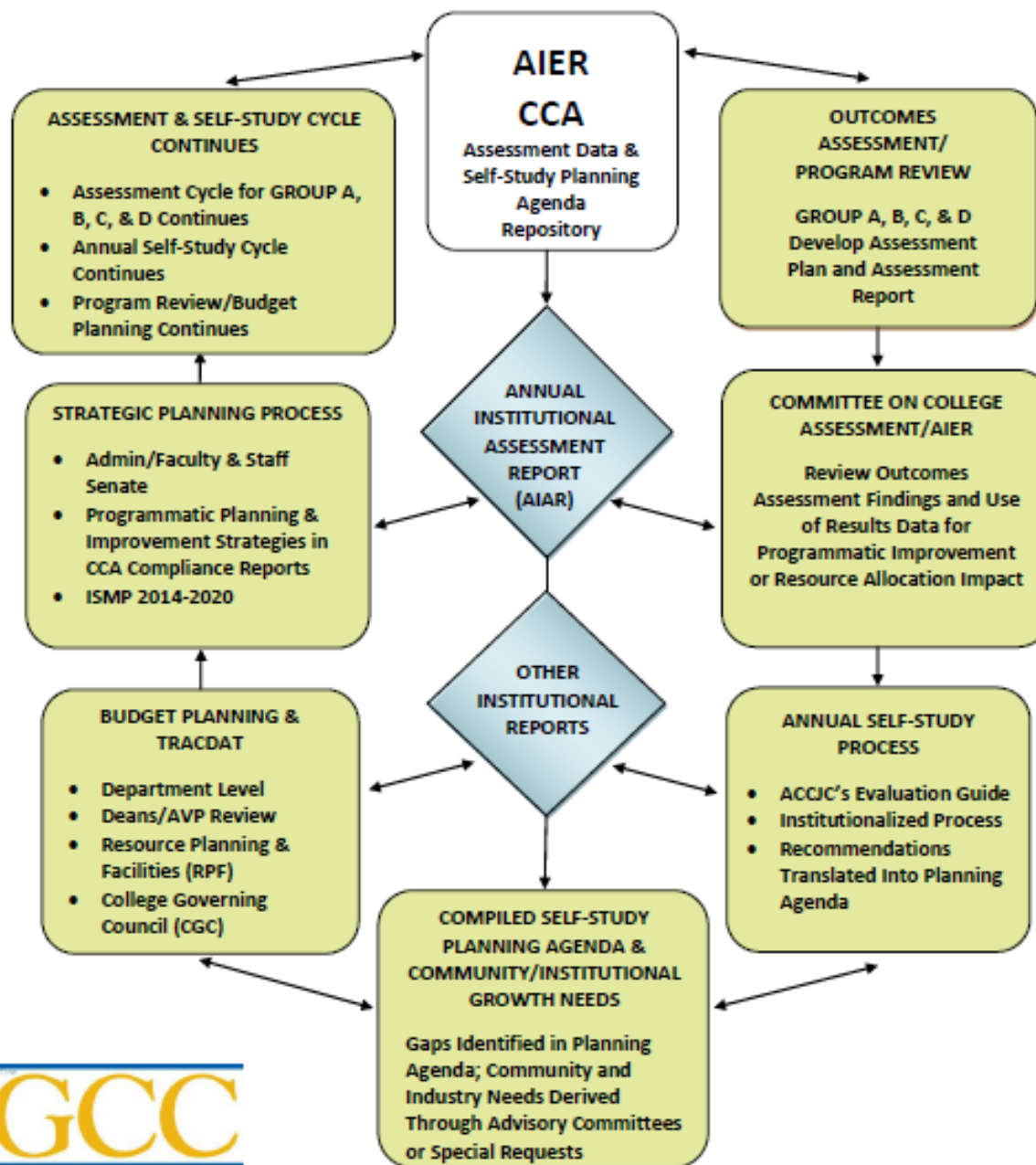
Student
Artifacts

Meaningful
Examples

How do we do assessment @ GCC?

- Annual Institutional Assessment Report (AIAR)
- Annual Reports
- Fact Books
- Faces of the Future (replaced with CCSSE)
- Foundation Board's Assessment Report
- Board of Trustees' Assessment Report
- IDEA Student Ratings of Instruction Survey Report
- President's Performance Appraisal Reports
- Institutional Self Evaluation Report

DATA-DRIVEN DEDICATED PLANNING (3DP) PROCESS



Committee Tools



What tools do we use?

- TracDat
- Taxonomy
- Two-Year Assessment Cycle Schedule
- Consolidated Feedback Sheet
- AIER Website
- Curriculum Manuals
- Advisory Committee Minutes

TracDat Administrative Tasks



Outcomes/Deliverables



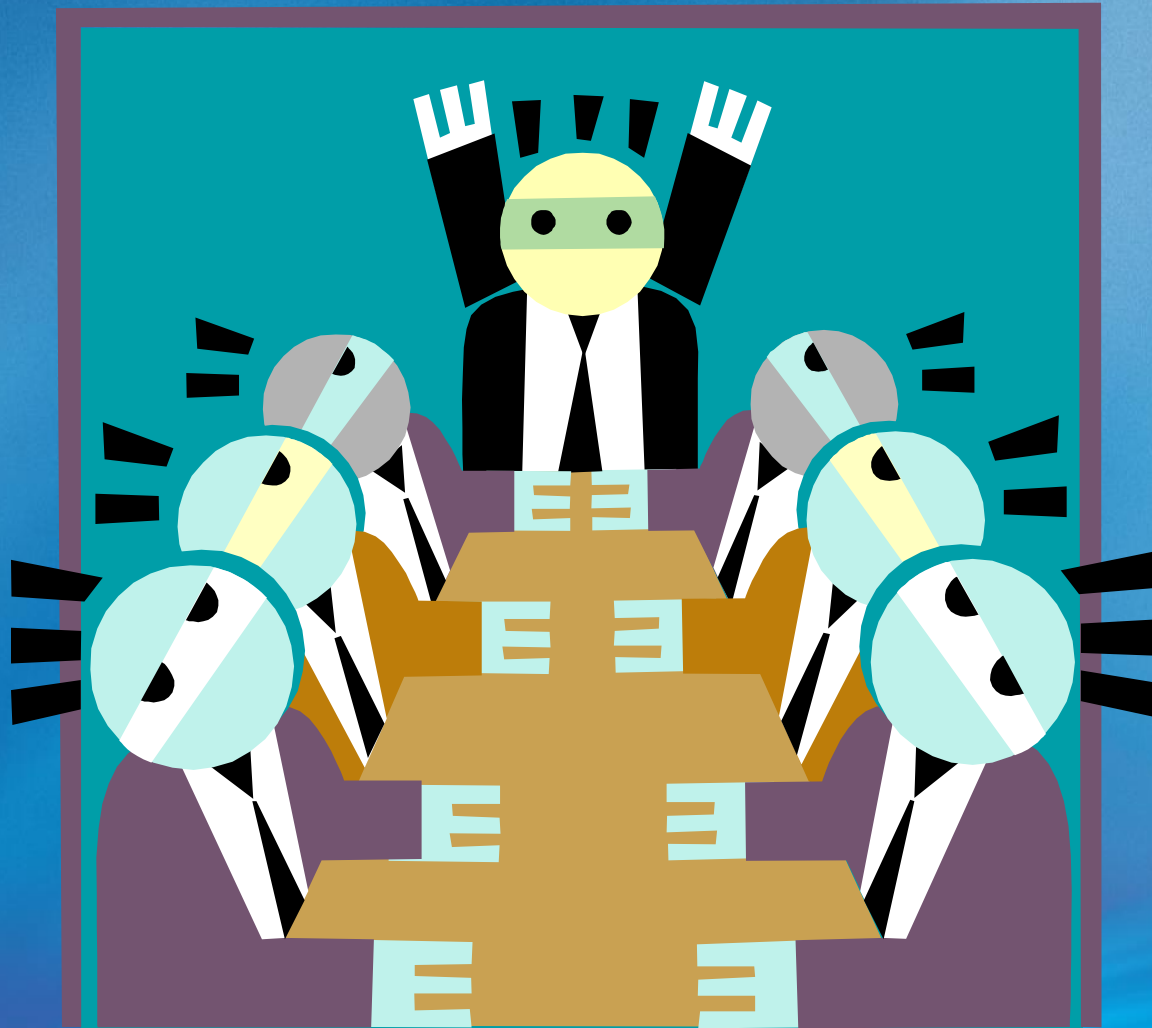
Minutes/Agendas



Where do we want to be?

- Provide better service
- Improve retention rate
- Improve compliance rate
- Improve curriculum aging rate
- Increase graduate rate
- Maintain accreditation status
- Students marketable around the world

- What is the shortest way to log in to TracDat?
- What does the CCA use to rate assessment plans and reports?
- Who knows where to go to find the Two-Year Assessment Cycle Schedule?
- How long is your assessment cycle?
- Who can list the requirements of an assessment plan, assessment report and closing the loop?



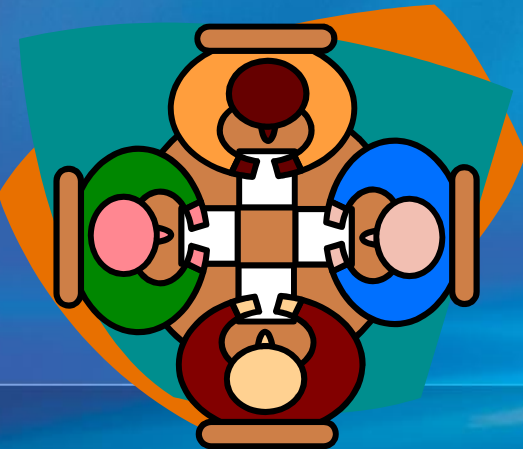
Meetings



Please take 90 seconds to write down three ideas for improvement.

For example:

1. Assessment in Practice Training
2. Guest Speakers
3. Annual Assessment Leadership Summits





Si Yu'us Ma'ase

