

## **Mission:**

**Guam Community College is a leader in career and technical workforce development, providing the highest quality, student-centered education and job training for Micronesia.**

### ***Sinangan Misi n*** (Chamorro translation)

**Guiya i Kulehon Kumunid t Gu han, i mas takhilo' mamanaguen fina'che'cho' yan i teknik t na kinahulo' i manf fache'cho' ya u na' gu guaha nu i manakhilo' yan manmaolek na tiningo' ni i manmafanan gui yan i fina'na'guen cho'cho' gi iya Maikronesiha.**

**GCC**

GUAM COMMUNITY COLLEGE

*Kulehon Kumuniddat Guåhan*

**GUAM  
COMMUNITY  
COLLEGE**



**I**NSTITUTIONAL  
**S**TRATEGIC  
**M**ASTER  
**P**LAN  
2014 - 2020

# Retention and Completion

ISMP 2014 - 2020

## GOAL 1

Strengthen and improve curriculum and educational delivery to provide a student-centered educational experience that fosters retention and completion to prepare our students for engagement in a global workforce.



# Conductive Learning Environment

ISMP 2014 - 2020

## GOAL 2

Transform the campus into a facility conducive for learning and teaching with a genuine sense of family spirit and dialogue among employees who are committed to student access and student success.





# Improvement and Accountability

ISMP 2014 - 2020

---

## GOAL 3

Enhance the existing integrated planning, review, and evaluation processes that provide for the allocation of resources based on assessment results and college-wide priorities in order to boost improvement and accountability:



# Visibility and Engagement

ISMP 2014 - 2020

## GOAL 4

Promote the Guam Community College brand to achieve regional, national, and international recognition:



# CAT Test & Practical Nursing Program



# Critical Thinking Assessment Test

## Skills Assessed by CAT Instrument

### Evaluating Information

- Separate factual information from inferences.
- Interpret numerical relationships in graphs.
- Understand the limitations of correlational data.
- Evaluate evidence and identify inappropriate conclusions.

### Creative Thinking

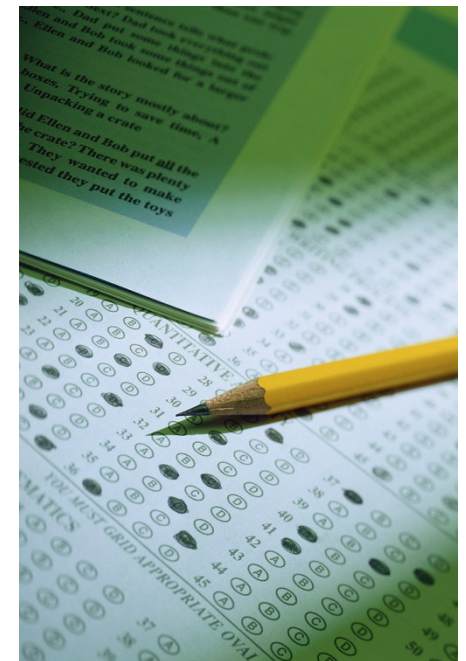
- Identify alternative interpretations for data or observations.
- Identify new information that might support or contradict a hypothesis.
- Explain how new information can change a problem.

### Learning and Problem Solving

- Separate relevant from irrelevant information.
- Integrate information to solve problems.
- Learn and apply new information.
- Use mathematical skills to solve real-world problems.

### Communication

- Communicate ideas effectively.

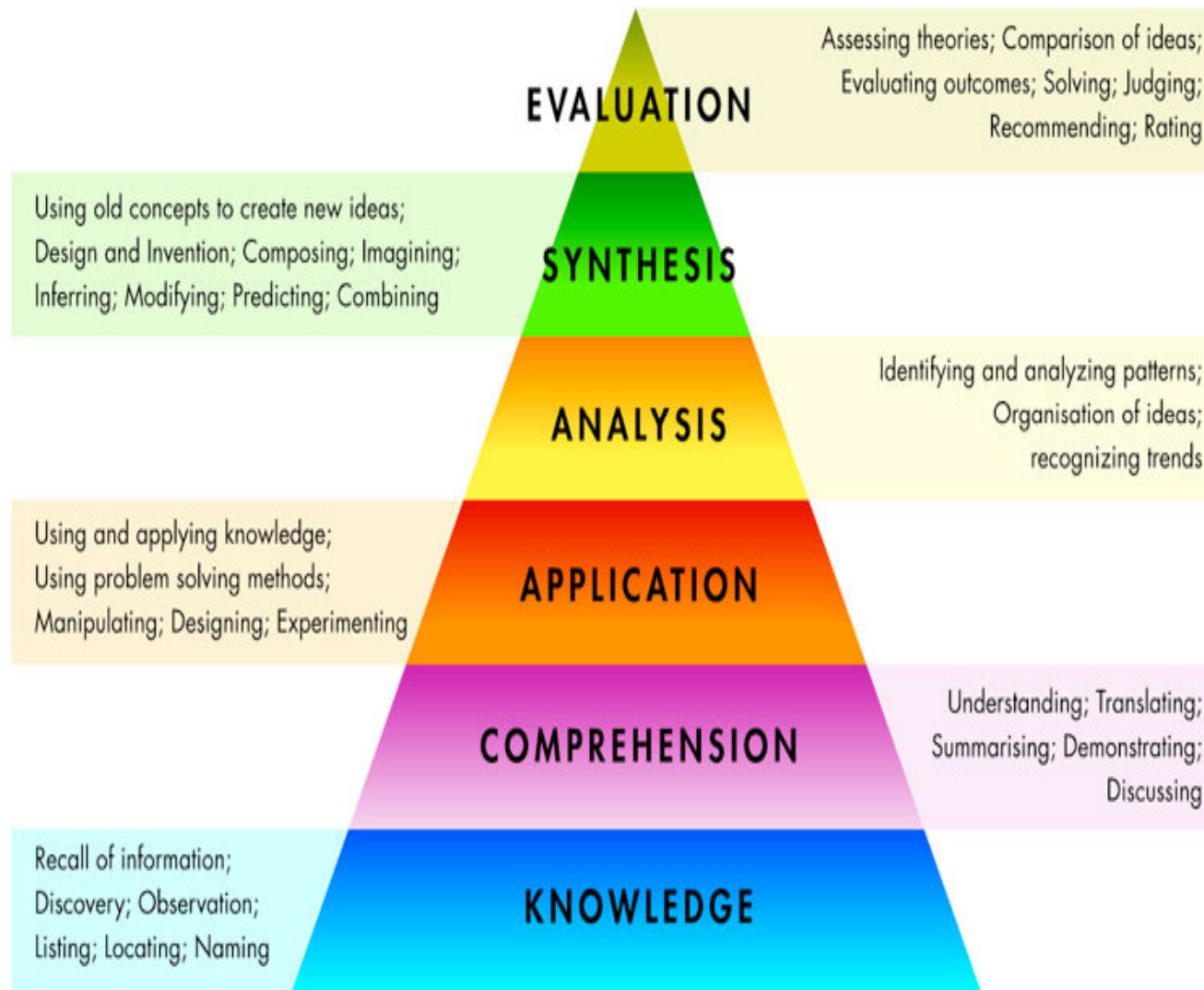




# NCLEX - PN

- National Council for Licensing Exam – Practical Nurse
- To ensure public protection, member board jurisdictions require a candidate for licensure to pass an exam that measures the ***competencies needed to perform safely and effectively as a newly licensed, entry-level nurse.***

# NCLEX: BLOOMS TAXONOMY



## Bloom's Taxonomy of Cognitive Skills

Evaluation

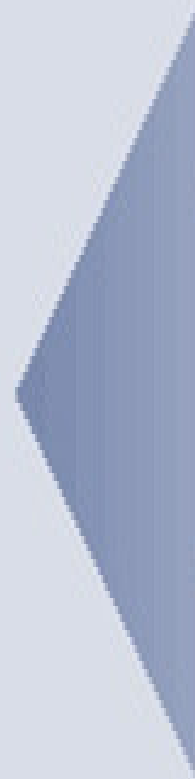
Synthesis

Analysis

Application

Comprehension

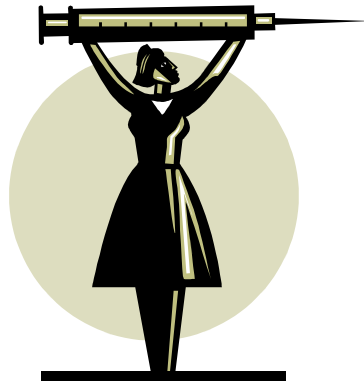
Knowledge (rote retention)



**Target of CAT**

# CAT Test

- Establishes a baseline assessment for student's critical thinking skills.
- Allows faculty to develop an action plan for student success
- Improved NCLEX-PN success rates





<b>GCC Articulation with</b>	<b>Date of Signing</b>
<b>University of Alaska Fairbanks, (AK)</b>	<b>July 09, 2013</b>
<b>DusitThani College, Thailand</b>	<b>July 26, 2013</b>
<b>Kadan Automotive Technical Colleges Japan</b>	<b>October 30, 2013</b>
<b>American Hospitality Academy (AHA), Philippines</b>	<b>November 27, 2013</b>
<b>Bellevue University, Nebraska (NE)</b>	<b>December 06, 2013</b>
<b>University of Phoenix, Arizona (AZ)</b>	<b>December 10, 2013</b>
<b>University of Makati, Philippines</b>	<b>February 18, 2014</b>
<b>Pacific Islands University (GU)</b>	<b>Under Review</b>
<b>Wayland Baptist University, Texas (TX)</b>	<b>Under Review</b>
<b>Chaminade University, Hawaii (HI)</b>	<b>Update; Under Review</b>



University of Phoenix®



# ARTICULATION

- **Articulation Process**
- **Accredited**
- **Articulation benefits students and GCC employees**
- **Block credit transfer for approved programs**
- **5% tuition reduction**
- **100% PLA reduction**
- **Online and campus-based courses**
- **Degree completion**

# WICHE

## Benefits

Access to the Western Undergraduate Exchange (WUE) program (largest regional tuition-reciprocity agreement in the nation)

Provides reduced tuition, at no more than 150% of resident tuition rate, at more than 150 participating 2- and 4-year public institutions (less expensive than non-resident tuition, which is at least double or more the resident tuition rate)



# 2012 Accreditation Findings-Standards

Accreditation Standard	TEAM RECOMMENDATIONS	# CLOSED	# PENDING
1	N/A	N/A	N/A
2	2	1	1
3	1	1	
4	1	1	
<b>TOTAL</b>	<b>4</b>	<b>3</b>	<b>1</b>

# 2012 Accreditation Findings-AIPs

<b>Accreditation Standard</b>	<b>Actionable Improvement Plans (AIPs)</b>	<b># CLOSED</b>	<b># PENDING</b>
<b>1</b>	3	3	
<b>2</b>	10	7	3
<b>3</b>	7	7	
<b>4</b>	5	5	
<b>TOTAL</b>	<b>25</b>	<b>22</b>	<b>3</b>

# **Prior Learning Assessment**

**also known as  
Adult Experiential Learning**

# What is PLA?

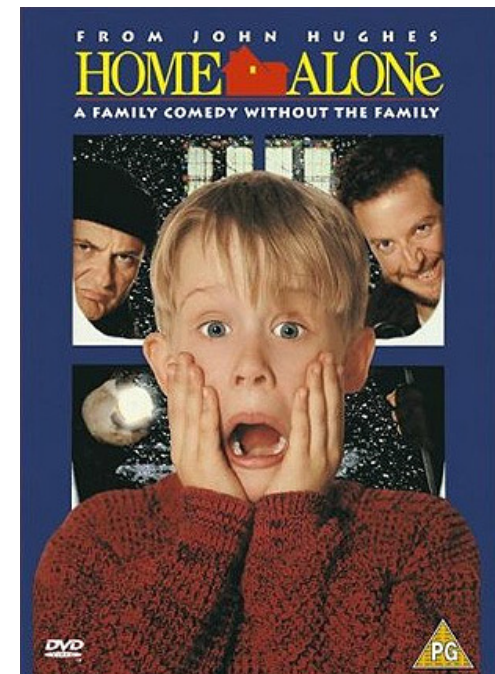
- Prior Learning *Assessment*  
or
- Prior Learning *Credit*

Credit given for prior *college-level learning*



# 1977 & 1992

- GCC has accepted transfer credit, AP test scores and other forms of credit since the college was established in 1977
- GCC first uses “Prior Learning” in the 1992-1993 catalog



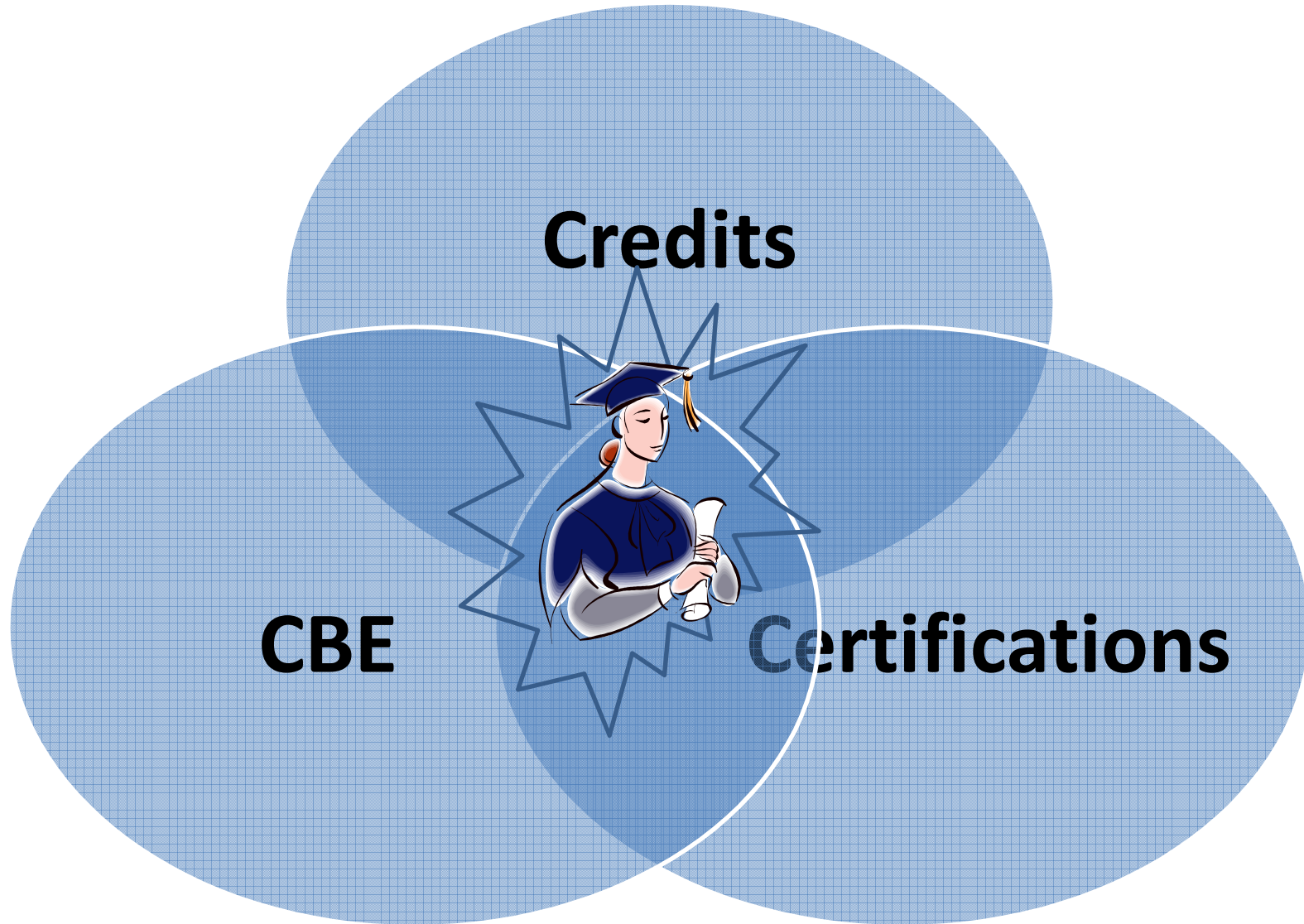
# What do we accept?

- **College Credit / Articulation**
- **External Certifications**
  - American Heart Assoc First Aid for HL131, Industry Certification test as final exam (AC225), etc.
- **Military training**
  - JST (Joint Services Transcript) / CCAF (Community College of the Air Force)
- **Credit by Exam / External Examination**
  - CBE (Credit by Examination)
  - CLEP (College-Level Examination Program)
  - AP / ACT (College Board-Advance Placement, )
  - DSST (aka DANTES- Defense Activity Non-Traditional Educational Support)
  - NCCRS (National Credit Recommending Service)
  - USAFI (United States Armed Forces Institute)
  - ACE recommendations (American Council on Education)

# **What will we do in the short term?**

- BOT PLA Policy approved 2<sup>nd</sup> reading, February 6, 2014**
- SOPs being finalized including timelines & fees**
- Revise the catalog to reflect updates**
- Introduce options for students and departments to achieve student educational goals**

# Goal







# Distance Education



**What is  
distance  
education?**





**Why are we  
doing it?**



**How are we  
doing it?**



**Who is  
working on it?**





**Where are we  
currently?**



# Distance Education



# Latest on the ACCJC Standards and Practice

**2002****Accreditation Standards****Count****Standard 1: Mission  
and Effectiveness****11****Standard 2: Student  
Learning Programs and  
Services****46****Standard 3: Resources****50****Standard 4: Leadership  
and Governance****32****TOTAL****139****2015****New Accreditation Standards****Count****Standard 1: Mission,  
Academic Quality,  
Institutional Effectiveness  
and Integrity****27****Standard 2: Student Learning  
Programs and Services****29****Standard 3: Resources****39****Standard 4: Leadership and  
Governance****33****128**

# ACCJC Updates in a Nutshell

- First reading-January 2014
- Second reading and adoption-June 2014**
- New Standards effective for **comprehensive institutional evaluations for reaffirmation of accreditation** beginning: **Spring 2016**
- Accreditation cycle: 7 years**
- Definition of “reaffirmation of accreditation”-  
**distinguish high performing institutions** that meet and exceed standards.
- One Baccalaureate degree** now allowed